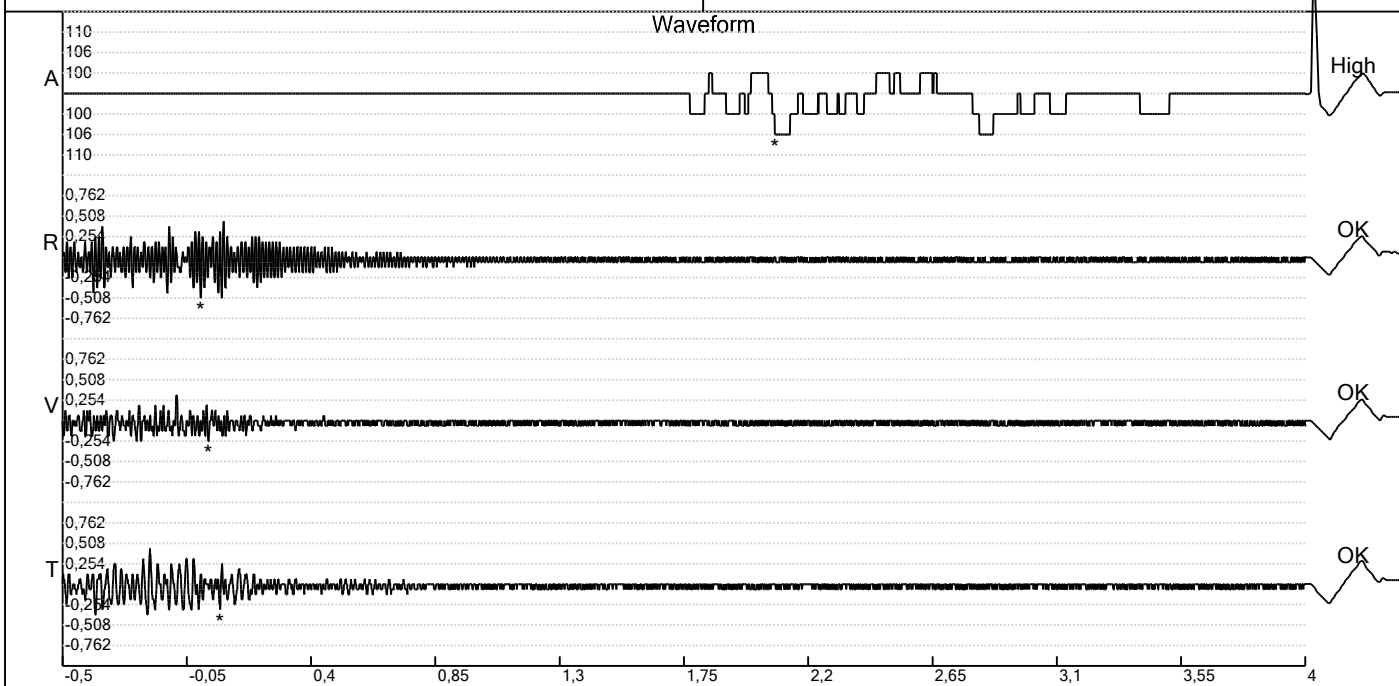


Carrière de BRS  
 Aywaille -6  
 Tir du 08/12/2025  
 Sismographe placé au  
 261 Halleux  
 4710 Comblain-au-Pont

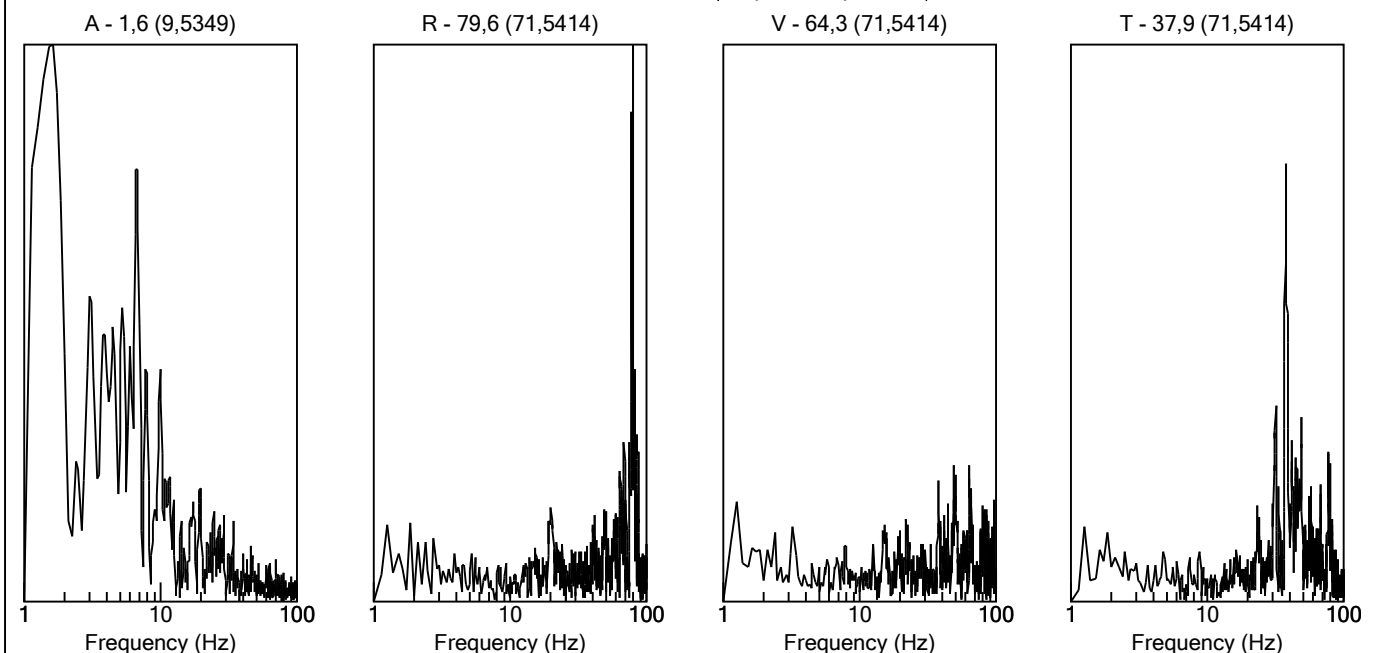
Record: 1789202512081402128.dtb  
 Number: 128  
 Seismograph: Mini-Seis 1789  
 Type of Record: Waveform  
 Date: 08-12-25 14:02:00  
 Duration: 4,50 Seconds  
 Sample Rate: 1024  
 Pre-Trigger: 0,5 Seconds  
 Seismic Trigger: 0,508 mm/s  
 Acoustic Trigger: 142,1 dB  
 Seismic Gain: 63,5  
 Acoustic Gain: 141,9 dB  
 Voltage: 6,6

**Peaks and Frequencies**  
 PPV Maximum (Geo #1): 0,508 mm/s  
 Acoustic #1: 106,0 dB @ 5,9 Hz (2,079102 s)  
 Radial #1: 0,508 mm/s @ 73,1 Hz (0 s)  
 Vertical #1: 0,254 mm/s @ 64,0 Hz (0,02734375 s)  
 Transverse #1: 0,318 mm/s @ 64,0 Hz (0,0703125 s)  
 Last Calibration Date:

**Graph Information**  
 Time Range: -0,499 s to 4 s, Intervals: 0,4499 Seconds



Fast Fourier Transform (Amplitude Spectrum)

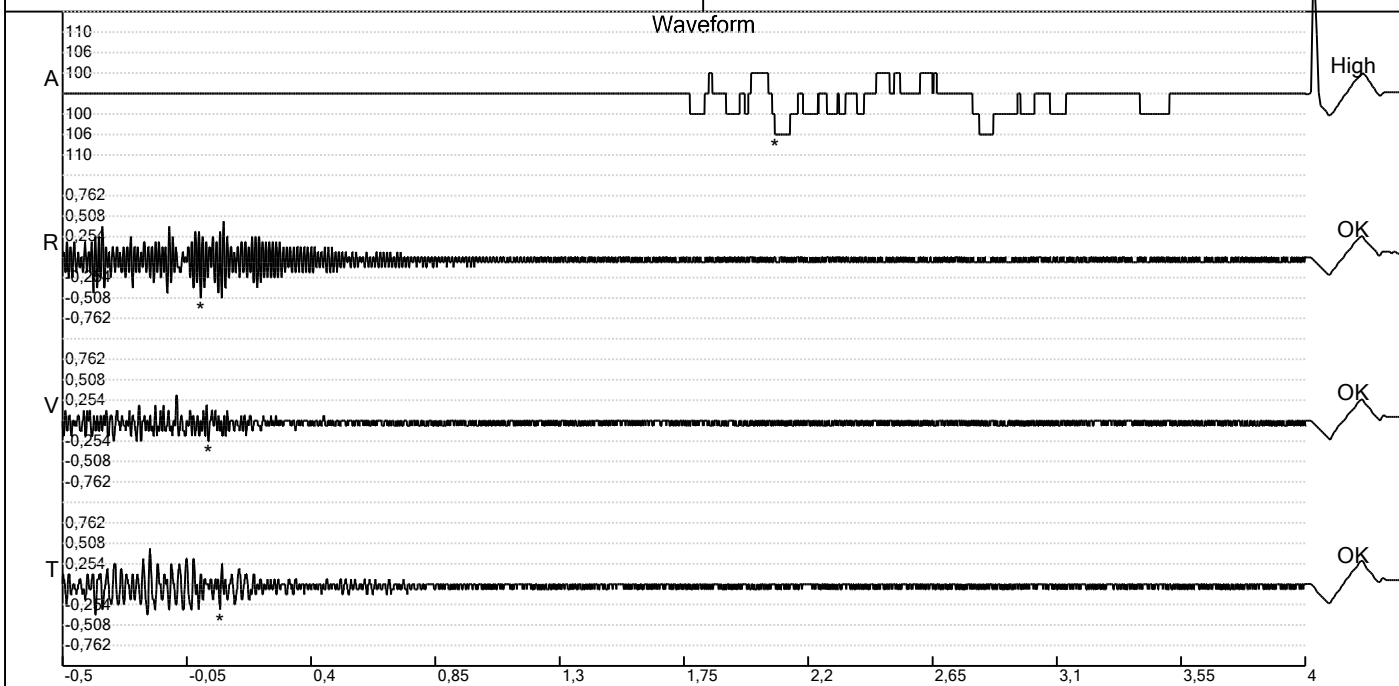


Carrière de BRS  
 Aywaille -6  
 Tir du 08/12/2025  
 Sismographe placé au  
 261 Halleux  
 4710 Comblain-au-Pont

Record: 1789202512081402128.dtb  
 Number: 128  
 Seismograph: Mini-Seis 1789  
 Type of Record: Waveform  
 Date: 08-12-25 14:02:00  
 Duration: 4,50 Seconds  
 Sample Rate: 1024  
 Pre-Trigger: 0,5 Seconds  
 Seismic Trigger: 0,508 mm/s  
 Acoustic Trigger: 142,1 dB  
 Seismic Gain: 63,5  
 Acoustic Gain: 141,9 dB  
 Voltage: 6,6

**Peaks and Frequencies**  
 PPV Maximum (Geo #1): 0,508 mm/s  
 Acoustic #1: 106,0 dB @ 5,9 Hz (2,079102 s)  
 Radial #1: 0,508 mm/s @ 73,1 Hz (0 s)  
 Vertical #1: 0,254 mm/s @ 64,0 Hz (0,02734375 s)  
 Transverse #1: 0,318 mm/s @ 64,0 Hz (0,0703125 s)  
 Last Calibration Date:

**Graph Information**  
 Time Range: -0,499 s to 4 s, Intervals: 0,4499 Seconds



Velocity vs. Frequency (DIN 4150-3 Tab 1)

